

With You Through Every Turn

 **SAILUN**

S861

325/95R24 22PR

**SPECIALLY RECOMMEND FOR
MIDDLE EAST AREA**

NEW PRODUCT Latest Pattern

S861

325/95R24 22PR



The New S861

- Economy design
- Longer wear life & service life
- Improved irregular wear resistance

Technical Data

PATTERN	SIZE	LI/SR	PR	TD (mm)	RIM (inch)	OD (mm)	SW (mm)	SLR (inch)	SINGLE (KG)	DUAL (KG)	AP (KPA)
S861	325/95R24	162/160K	22PR	15.5	9.00	1228	312	22.60	4750	4500	850

Application

All Position

Primary ▲



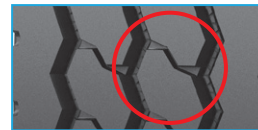
One-way distance: ≤500km
Road Condition: Highway
Speed Limit: ≤80km/h

Loading Rate: Maximum 150% load limited
Axle Position: All Position

Product Position Special design for standard load, paved roads, short-moderate distance transport as well as all trucks.

Product features

Longitudinal grooves with shallow sipes provide the tyre with a strong grip performance and excellent wet-skid resistance



Improved shoulder design for heat dissipation and improve tread life



Three zig-zag grooves maximize traction under all applications

