

MICHELIN / AGILIS³ RC

RIM SIZE	DIMENSIONS	LOAD INDEX / SPEED INDEX**
14"	185/80 R 14C	102/100R TL
	195/80 R 14C	106/104R TL
15"	195/80 R 15C	108/106S TL
	NEW 195/75 R 15LT	109/107S TL
	195/70 R 15C	104/102S TL
	205/70 R 15C	106/104S TL
	215/70R15C	109/107S TL
16"	NEW 195/75 R 16C	107/105T TL
	215/70 R 16C	108/106T TL
	NEW 215/65 R 16C	109/107T TL
	NEW 235/65 R 16C	115/113T TL
17"	NEW 235/60 R 17C	117/115T TL



(**) Tyre for utility vehicles are governed by rule R54 of the UNECE (in particular, this rule stipulates that the load capacity and speed indexes must be indicated on the tyre). However, in certain cases, there may be an additional marking with a higher speed capacity, combined with a reduction of load capacity.

MICHELIN / AGILIS³ RC **NEW**



SAFER FOR LONGER



FIND OUT MORE AND VISIT US ONLINE

WEBSITE
<https://africa.michelin.com/fr/>

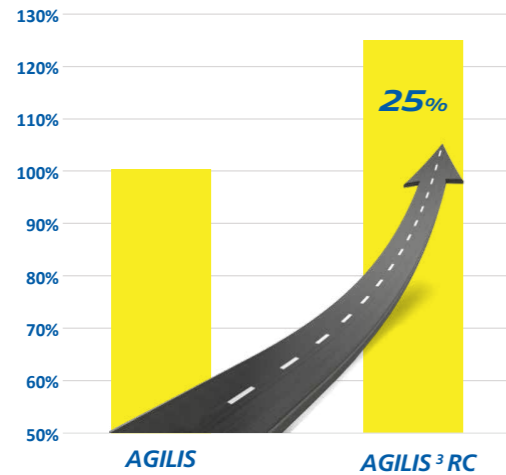


MICHELIN / AGILIS³



MICHELIN EXCELLENCE IN LONGEVITY

- 25%# more mileage vs previous Michelin Agilis generation



SAFETY MADE TO LAST

- Market leading wet braking performance from the 1st to the last kilometer by 13%*



REINFORCED FOR ROBUSTNESS

- Unique kerbing shields protection against sidewall damage
- Stone ejectors reduce downtime for you and your business



ENVIRONMENT FRIENDLY DESIGN

- Superior rolling resistance resulting in reduced fuel consumption by 17%*
- Minimize environmental impact for you and your customers

* Wet braking test 70 to 0 kph, conducted by TUV Rheinland Thailand Ltd, on Michelin's request, in January 2020, on dimension 215/70R15C on Toyota Hiace Commuter, laden condition of 2,950 kg GVW. Comparing NEW and WORN Michelin Agilis 3 RC versus three other competitor brands of tyres.
Reference: TUV Rheinland Thailand Ltd, Technical Report No. 242106343 002

Test result from Michelin internal test, conducted on real roads in Thailand, with 215/70R15C tires fitted on Ford Ranger (pick-up truck). Load: Front axle: 1446 kg / Rear axle: 1443 kg.
Wear life index was calculated by the "Harmonic average" of 4 tires assuming the Customer regularly rotates tires.

EVERGRIP TECHNOLOGIES

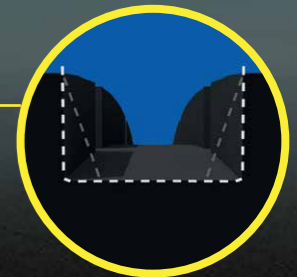
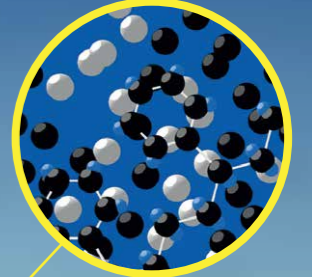
STONE EJECTOR

Prevents stone retention, resulting in improved service life



INNOVATIVE POLYMER

Improved wet grip, fuel saving and mileage

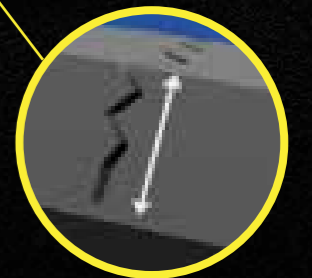


U SHAPE GROOVES
Higher water clearance for lasting wet grip performance



SIDEWALL SHIELDS

The extra Sidewall shoulder gives added protection without compromising the casing flexibility and sidewall damage



FULL DEPTH SIPES

Market leading wet grip performance; both new and when worn